

# SATA 300 RAID PCI Express Card

**Create a computing platform that balances cost, performance and compatibility.**

**Model**  
160377

PCI Express-enabled desktop computers can take full advantage of SATA speed and PCI Express efficiency with the MANHATTAN® SATA 300 RAID PCI Express Card. Easily installed, it adds dual internal SATA 300 ports to connect data storage and other SATA peripheral devices. Server maintenance is made easy when there is not a need to power down the server to add the new drives or replace a card. PCI Express supports hot-swapping of the PCI Express Card without having to shut down the server. This can help reduce the downtime of essential network resources.

## Fast Data Transfer

The MANHATTAN SATA 300 RAID PCI Express Card supports SATA 3 Gbps and RAID 5 data transfer rates. Using 48-bit LBA, it breaks the size limit of 137 GB hard drives to support larger storage devices. Compliance with PCI Express 1.0a and serial ATA 1.0 specifications ensures that most PCI Express Card-equipped notebook computers and connected SATA devices can operate at peak performance.

## RAID Data Storage Support

The RAID scheme allows for greater flexibility when using multiple hard drives to share or replicate data. Users can configure the MANHATTAN SATA 300 RAID PCI Express Card for stability, speed or a single large drive. The MANHATTAN SATA 300 RAID PCI Express Card supports RAID 5 (distributed parity RAID) for the highest read data transaction rate. JBOD support combines all drives into a single "virtual" disk drive. RAID 0 (striping) helps to increase the performance of data transfer by simultaneously writing data to multiple drives. RAID 1 (mirroring) reduces loss risks from disk failure by writing identical data on two drives. RAID 0+1 (mirrored-striping) combines both to provide performance enhancements and the data availability and integrity benefits.

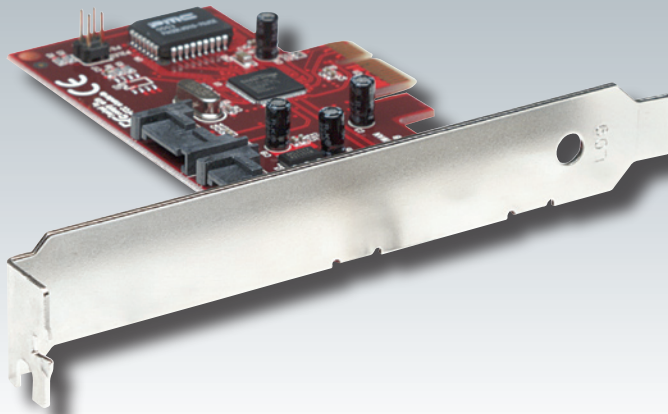
## Simple Installation

The MANHATTAN SATA 300 RAID PCI Express Card fits PCI Express x1, x2, x4, x8 and x16 lane buses to enable a quick and easy installation, and supports safe hot-swappable functionality. A low-profile bracket is also included to facilitate installation in almost any computer case.

## Lifetime Warranty

Strict manufacturing standards ensure the highest quality in all MANHATTAN products. All items carry a full Lifetime Warranty — the strongest quality commitment anyone can make.





**Model**  
160377

## Features

- Easily adds two internal SATA 300 ports
- Each port supports SATA 3 Gbps and RAID 5 data transfer rates
- Provides RAID 5 (distributed parity RAID), JBOD, RAID 0 (striping), RAID 1 (mirroring), RAID 0+1 (mirrored-striping)
- Low-profile form factor fits PCI Express x1, x2, x4, x8 and x16 lane buses
- Plug and Play installation; Windows compatible; hot-swappable
- Lifetime Warranty

## Specifications

### PORT SPECIFICATIONS

- Two internal SATA 300 ports
- Compliant with serial ATA 1.0 specifications
- 48-bit LBA supports HDD larger than 137 GB
- Supports two independent SATA channels
- Silicon serial controller
- Independent link, transport and data FIFO, and command fetch, scatter/gather and command execution
- Supports legacy command queuing (LCQ), native command queuing (NCQ), non-zero offsets NCQ, out-of-order data delivery NCQ and FIS-based switching with port multipliers
- 31 commands and scatter/gather tables per port
- Dual 2-pin headers for LED indicator connections
- 3.3 V

### BUS SPECIFICATIONS

- PCI Express x1
- Bus speed: 2.5 Gbps
- Compliant with PCI Express specifications 1.0a

### SYSTEM REQUIREMENTS

- Windows 2000/XP/Server 2003/Vista
- PCI Express-enabled system with an available Express Card slot
- CD-ROM drive

### PACKAGE CONTENTS

- SATA 300 RAID PCI Express Card, x1 lane
- Regular and low-profile brackets
- User manual and driver CD

For more information on MANHATTAN products, consult your local dealer or visit [www.manhattan-products.com](http://www.manhattan-products.com).

  
**MANHATTAN**  
BRINGING COMPUTERS TO LIFE

Copyright © MANHATTAN

All names of products or services mentioned herein are trademarks or registered trademarks of their respective owners. Distribution and reproduction of this document, and use and disclosure of the contents herein, are prohibited unless specifically authorized.

MH-160377-DS-1006-03