

Hi-Speed USB 2.0 PCI Card

4 External + 1 (Shared) Internal Ports

Model
171557

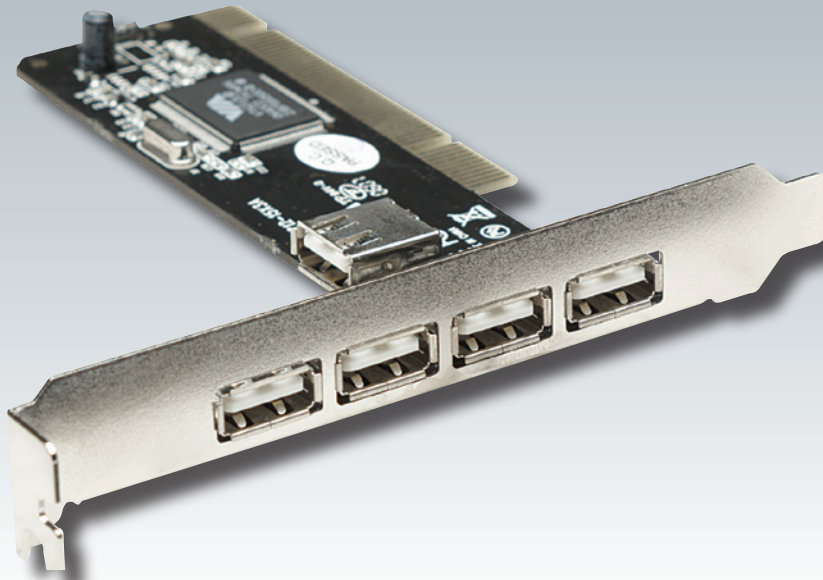
Quickly add needed speed and convenience.

Add four external Hi-Speed USB 2.0 and one shared internal Hi-Speed USB 2.0 hot-swappable ports to a desktop PC for added convenience. The MANHATTAN® Hi-Speed USB 2.0 PCI Card supports data transfer rates of 480 Mbps. Its Windows and Plug and Play compatibility helps make installation quick and easy.

Lifetime Warranty

Strict manufacturing standards ensure the highest quality in all MANHATTAN products. All items carry a full Lifetime Warranty — the strongest quality commitment anyone can make.





Model
171557

Features

- Adds 4 external and 1 (shared) internal Hi-Speed USB 2.0 ports
- Each port supports Hi-Speed USB 2.0 transfer rates of up to 480 Mbps
- Compatible with all USB devices and hot-swappable — add and remove USB devices at any time
- Works with various types of USB devices, including hubs, removable drives, digital cameras, scanners, CD-RWs, DVD-ROMs, PC video cameras and printers
- No driver software needed for Windows 2000 (SP4)/XP/2003 or Vista
- Supports high-speed (480 Mbps), full-speed (12 Mbps), and low-speed (1.5 Mbps) data transfer modes for simultaneous operation of multiple USB 2.0/1.1 devices
- Lifetime Warranty

Specifications

STANDARDS AND CERTIFICATIONS

- USB 2.0/1.1/1.0
- FCC
- RoHS
- CE
- WEEE

PORT SPECIFICATIONS

- 4 external Hi-Speed USB 2.0 ports, A-type
- 1 (shared) internal Hi-Speed USB 2.0 port, A-type

BUS SPECIFICATIONS

- PCI 32-bit interface
- VIA 6212 chipset

SYSTEM REQUIREMENTS

- Windows 2000/XP/Server 2003/Vista compatible
- Available PCI slot required

PACKAGE CONTENTS

- Hi-Speed USB 2.0 PCI Card
- Quick install guide

For more information on MANHATTAN products, consult your local dealer or visit www.manhattan-products.com.


MANHATTAN[™]
BRINGING COMPUTERS TO LIFE

Copyright © MANHATTAN

All names of products or services mentioned herein are trademarks or registered trademarks of their respective owners. Distribution and reproduction of this document, and use and disclosure of the contents herein, are prohibited unless specifically authorized.

MH-171557-DS-0707-01