

# HI-SPEED USB 2.0 SVGA CONVERTER QUICK INSTALL GUIDE MODEL 179041

Thank you for your purchase of the MANHATTAN® Hi-Speed USB 2.0 SVGA Converter, Model 179041.

Without the need for an external power supply, this device lets you add LCD projectors, monitors or SVGA devices to notebook or desktop computers to increase productivity, improve desktop layouts and extend an active work area across dual monitors.

*Supports resolutions up to 2048 x 1280 in 16-bit or 1680 x 1050 in 32-bit color. See full list on reverse.*



*Connects to any USB port without conflicts or external power supplies.*

## SPECIFICATIONS

### Standards & Certifications

- Hi-Speed USB 2.0, EHCI, CE, FCC

### General

- Chipset: SiS
- Display memory: 16 MB SDRAM
- Bus powered
- Connections: USB type A

- male; HD 15 female
- Supports Suspend & Wake modes

### Supported Resolutions

- See back page

### Physical

- Dimensions: 10.75 x 5 x 2.5 cm (4.25 x 2 x 1 in.)
- Cable length: 45.75 cm (18 in.)

- Weight: 113 g (4 oz.)
- Case material: ABS plastic

### System Requirements

- Windows 2000/XP/Vista
- Open Hi-Speed USB 2.0 port

### Package Contents

- Hi-Speed USB 2.0 SVGA Converter
- Quick install guide & driver CD

  
**MANHATTAN**  
BRINGING COMPUTERS TO LIFE

MANHATTAN® offers a complete line of PC Components, Peripherals, Cables and Accessories. Ask your local computer dealer for more information or visit us online at

**[www.manhattan-products.com](http://www.manhattan-products.com)**

Copyright © MANHATTAN

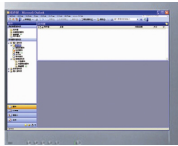
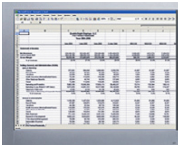
All products mentioned are trademarks or registered trademarks of their respective owners.

MH-179041-QIG-0208-02

# USAGE OPTIONS

## Office workstation:

- View spreadsheets across as many 6 additional screens with display continuity
- Multitask without overlapping windows
- Open attachments on one screen while reading the e-mail on the other



## Graphics workstation:

- Use extra displays for pallets/tools



## Editing workstation:

- Type documents on one screen while referencing another



## Comparisons:

- Use a notebook for viewing multiple screens
- View charts and live data at the same time



## Entertainment:

- View videos/TV on one screen and reviews on the other



# SUPPORTED RESOLUTIONS

## Wide Screen

Aspect Ratio	Resolution	Color Bits
16:10	2048 x 1280	16 bits
16:10	1920 x 1200	16 bits
16:9	1920 x 1080	16 bits
16:10	1680 x 1050	16/32 bits
16:10	1440 x 900	16/32 bits
16:10	1280 x 800	16/32 bits
15:9	1280 x 768	16/32 bits

## Standard Monitor

Aspect Ratio	Resolution	Color Bits
5:4	1280 x 1024	16/32 bits
4:3	1600 x 1200	16/32 bits
4:3	1280 x 960	16/32 bits
4:3	1152 x 864	16/32 bits
4:3	1024 x 768	16/32 bits
4:3	800 x 600	16/32 bits