

Parallel PCI Card

Model
324007

Add a parallel port with fewer conflicts.

Compatible with most parallel peripherals, the MANHATTAN® Parallel PCI Card is an ideal solution for attaching a parallel device — printer, storage devices and more — through a PCI card. Its high-speed parallel DB25 Com port fully supports PCI IRQ sharing even if accessed simultaneously to help save valuable resources for other expansion cards.

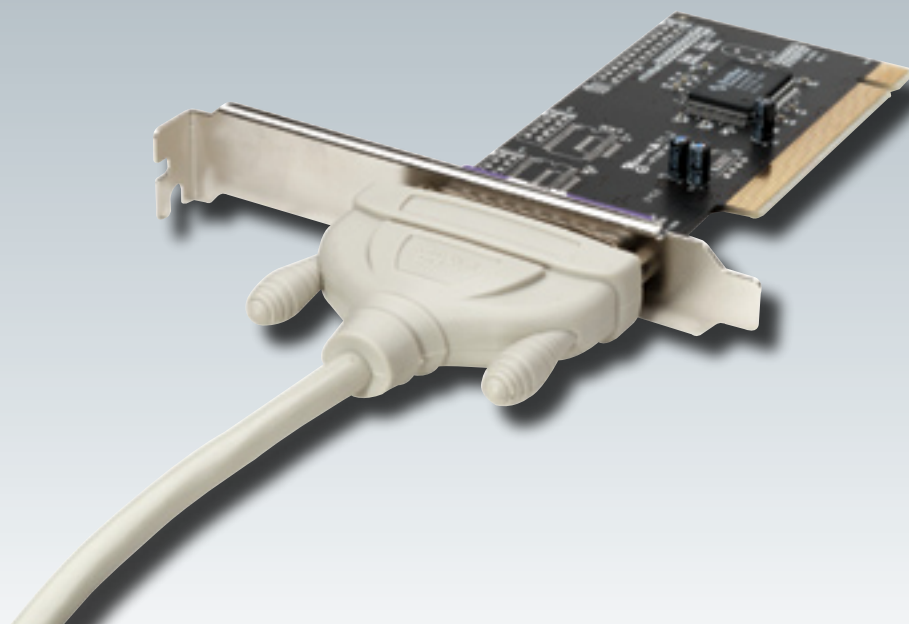
Easy Installation

Windows 2000/XP/Server 2003/Vista 32/64-bit compatibility, Plug and Play capability and automatic IRQ and IO address selection make installation easy to help avoid configuration conflicts with other devices.

Lifetime Warranty

Strict manufacturing standards ensure the highest quality in all MANHATTAN products. All items carry a full Lifetime Warranty — the strongest quality commitment anyone can make.





Model
324007

Features

- Adds a parallel DB25 port with Enhanced Parallel Port (EPP), Standard Parallel Port (SPP) and Enhanced Capability Port (ECP) support to desktop computers
- Up to 1.5 MBps parallel throughput
- Fully supports PCI IRQ sharing
- Automatically selects IRQ and IO address
- Lifetime Warranty

Specifications

STANDARDS AND CERTIFICATIONS

- CE
- FCC
- PCI 2.1
- WEEE

GENERAL

- Parallel DB25 female connection
- Up to 1.5 MBps parallel throughput with maximum 16 Byte FIFO
- MosChip 9805 chipset
- Requires available PCI slot
- Windows 2000/XP/Server 2003/Vista 32/64-bit compatible

BUS

- PCI 2.1 32-bit, 33 MHz
- Supports 32/64-bit PCI slot
- 5 V bus power

PHYSICAL

- Dimensions, L x W x H: 124 x 122 x 23 mm (4.9 x 4.8 x 0.9 in)
- Weight: 53.8 g (1.9 oz.)

PACKAGE CONTENTS

- Parallel PCI Card
- User manual and driver CD

For more information on MANHATTAN products, consult your local dealer or visit **www.manhattan-products.com**.


MANHATTAN[™]
BRINGING COMPUTERS TO LIFE

Copyright © MANHATTAN

All names of products or services mentioned herein are trademarks or registered trademarks of their respective owners. Distribution and reproduction of this document, and use and disclosure of the contents herein, are prohibited unless specifically authorized.

MH-324007-DS-0708-02