



INTELLINET
NETWORK SOLUTIONS

BRINGING NETWORKS TO LIFE



Wireless Outdoor PoE Access Point and Bridge

Model
503679

Temperature controlled with Cable Manager Bracket Professional high-power PoE access point and bridge.

The 503679 is a professional Wireless G access point and bridge, with a wide assortment of features appealing to wireless users who require a durable, flexible and powerful solution.

Durability

The 503679's housing is made of rugged aluminum, providing tremendous protection that includes a waterproof rating of IP66 and the ability to withstand wind speeds up to 120 km/h (75 mph).

PoE – Providing Extreme Flexibility

Power over Ethernet (PoE) is the latest in Ethernet technology that allows the placement of equipment in locations where there are no AC power connections. With power being transferred through the Ethernet cable, the unit can be installed wherever the RJ-45 cable can be run.

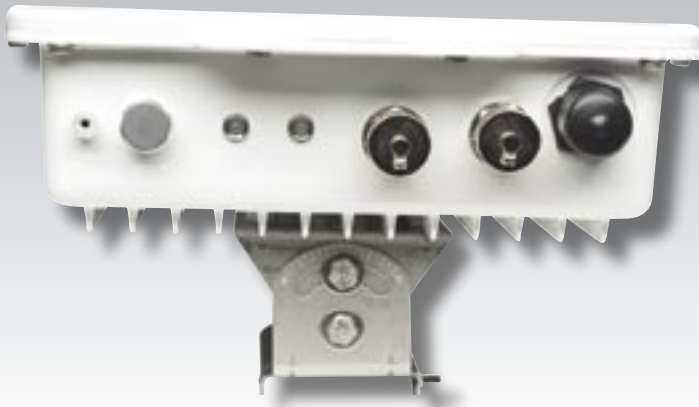
High Speed and Distance

The 503679 is a sophisticated wireless Super G access point and bridge — delivering transmission rates of up to 108 Mbps. And with the built-in directional antenna, transmissions can be sent and received up to a distance of 10 km (6 miles).

Lifetime Warranty

Strict manufacturing standards ensure the highest quality in all INTELLINET NETWORK SOLUTIONS products. All items carry a full Lifetime Warranty — the strongest quality commitment anyone can make.





Model
503679

Features

- Fully compatible with IEEE 802.11b/g WLAN standard
- Up to 108 Mbps network data transfer rate
- Industrial-grade IP 66 housing for optimal protection against dust and water
- Withstands wind speeds of up to 120 km/h (75 mph)
- Up to 10 km (6 mi.) wireless distance in PtP bridging mode
- Integrated 9 dBi panel antenna
- N-type connector for connection of an external high-gain antenna
- Supports Wireless Access Point, Repeater and Bridging modes
- Supports WEP and WPA (TKIP and AES) data encryption
- Supports MAC filtering for wireless clients
- VPN pass-through for IPSec, PPTP and L2TP
- Web, Telnet and SNMP management
- Configuration backup and restore via Web interface
- Includes Microsoft Windows-based configuration and management utility
- Power over Ethernet support using included PoE injector (non-IEEE802.3af compliant)
- Lifetime Warranty

Specifications

Standards

- IEEE 802.11b (11 Mbps Wireless LAN)
- IEEE 802.11g (54 Mbps Wireless LAN)
- IEEE 802.11g+ (108 Mbps Wireless LAN)
- IEEE 802.3 (10Base-T Ethernet)
- IEEE 802.3u (100Base-TX Fast Ethernet)
- SNMPv1/v2c (Simple Network Management Protocol)

General

- LAN ports: one RJ-45 10/100 Mbps data/PoE port
- FTP pass-through
- VPN pass-through support: IPSec, PPTP, L2TP

Management Options

- Configuration methods: HTTP, SNMP and Telnet
- General configuration options:
 - Frequency: channel frequency step size = 5 MHz
 - Bandwidth
 - Automatically associate to WAP with identical ESSID
 - Seamless roaming
 - IP address (DHCP and static IP)
 - Firmware upgrade on the fly
 - Two-level password security (administrator and super user level)

Wireless

- Wireless frequency range: 2.400 – 2.4835 GHz
- Modulation technologies:
 - 802.11b: Direct Sequence Spread Spectrum (DSSS): DBPSK, DQPSK, CCK
 - 802.11g: Orthogonal Frequency Division Multiplexing (OFDM): BPSK, QPSK, 16QAM, 64QAM
- Channels:
 - USA & Canada: 12 channels
 - Europe: 13 channels
 - Japan: 14 channels
- Data rates:
 - IEEE 802.11b (11 Mbps, 5.5 Mbps, 2 Mbps, 1 Mbps)
 - IEEE 802.11g (54 Mbps, 48 Mbps, 36 Mbps, 24 Mbps, 18 Mbps, 12 Mbps, 9 Mbps, 6 Mbps)
- Output power: max. 20 dBm
- Receiver sensitivity: -73 dBm (54 Mbps); -87 dBm (11 Mbps)
- Maximum coverage distance: 10 km (6 mi.) in Bridge Point to Point mode
- Wireless security:
 - WEP encryption (64/128/152 bit)
 - WPA (TKIP and AES)
 - 802.1x support in AP mode
 - Client access control through media access control (MAC) filter
 - Disable/enable ESSID broadcast

- Wireless operation modes: Access Point, Repeater and Bridging
- Maximum wireless user connections: 50
- Antenna:
 - Integrated 9 dBi panel antenna, beam width 45° vertical, 45° horizontal
 - N-type connector for external high-gain antenna

LEDs

- Power
- WLAN

Certifications

- International protection rating: IP 66 ("dust tight" & "powerful water jets")
- Random Vibration (IEC-68-2-64)
- Shock (IEC-68-2-29)
- Drop (IEC-68-2-32)
- Salt Fog (IEC-68-2-11)
- Solar Radiation (IEC-68-2-5)
- RoHS
- Safety: EN 60950
- EMC and RFI: EN301893 + EN301489
- ESD: IEC 61000-4-2
- FCC Class B
- CE Mark

Environmental

- Dimensions: 250 (W) x 260 (L) x 80 (H) mm (9.8 x 10.2 x 3.1 in.)
- Weight: 3.4 kg (7.5 lbs.)
- Operating temperature: -35 – 60°C (-31 – 140°F)
- Operating humidity: 10 – 95% RH, non-condensing

Power

- External power adapter
 - Input 100 - 250 V AC, 50 - 60 Hz, 0.5 A
 - Output 48 V DC, 0.4 A + Data signal (non-IEEE 802.3af compliant)
 - Power consumption: 7 Watts max.

Package Contents

- Outdoor AP
- 48 V DC power adapter (PoE injector)
- Power cord
- Screw, washers and U-bolts
- Mounting brackets (for walls or pole mount)
- Grounding wire
- RJ45 waterproof plastic plug (IP67)
- CD-ROM (utility and user guide)
- Quick install guide

For more information on INTELLINET NETWORK SOLUTIONS products, consult your local dealer or visit www.intellinet-network.com.



Copyright © INTELLINET NETWORK SOLUTIONS