



INTELLINET
NETWORK SOLUTIONS

BRINGING NETWORKS TO LIFE



8-Port Fast Ethernet Office Switch

Easily add more computers or other Ethernet devices to your network.

Model
523318

The INTELLINET NETWORK SOLUTIONS™ 8-Port Fast Ethernet Office Switch is perfect for the small and medium-size business looking a durable switch that is reliable and easy to install. The metal case is more durable than a plastic enclosure, and is very appropriate for locations with potentially harsh environments, such as a warehouse, factory or wiring closet.

Versatile

The Fast Ethernet Office Switch connects up to eight computers, servers, printers, switches or any other Ethernet devices at 10 or 100 Mbps over Ethernet cables, and works with any operating system.

Easy to Install and Maintain

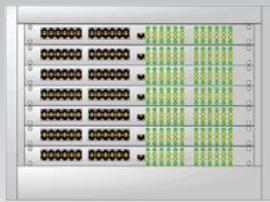
The auto features of this switch make installation Plug and Play and hassle free. There is no configuration required, and you don't need to worry about using special cables for uplink ports, since each port is equipped with Auto MDI/MDI-X crossover.

Lifetime Warranty

Strict manufacturing standards ensure the highest quality in all INTELLINET NETWORK SOLUTIONS products. All items carry a full Lifetime Warranty – the strongest quality commitment anyone can make.



LAN Switches

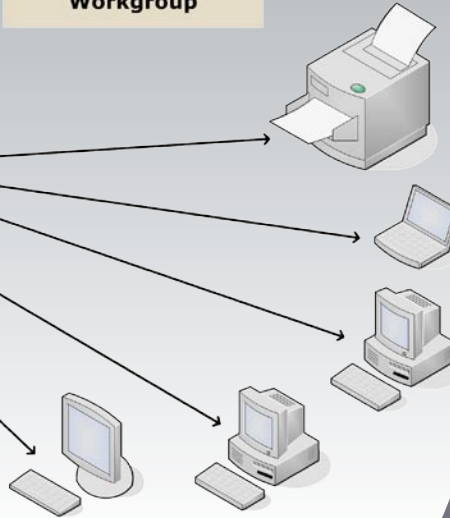


Server

Fast Ethernet Office Switch



Workgroup



LIFETIME WARRANTY

Model
523318

Features

- 10/100 auto sensing ports — automatically detect optimal network speeds
- Supports any combination of 10 Mbps or 100 Mbps network devices
- All RJ-45 ports with Auto-MDIX (auto uplink) support
- Supports NWAY auto-negotiation
- Broadcast storm control
- Store and forward switching architecture
- Full/half duplex operation
- IEEE 802.3x flow control for full duplex
- Zero packet loss back-pressure flow control for half duplex
- Packet filtering/forwarding rates: 148,800 pps (100 Mbps), 14,880 pps (10 Mbps)
- Supports 2048 MAC address entries
- 96 kBytes buffer memory
- Compact metal case
- LEDs for power, link/activity, full/half duplex
- Lifetime Warranty

Specifications

STANDARDS

- IEEE 802.3 (10Base-T Ethernet)
- IEEE 802.3u (100Base-TX Fast Ethernet)
- IEEE 802.3x (flow control, for full duplex mode)

GENERAL

- Media support:
 - 10Base-T Cat3, 4, 5 UTP/STP RJ-45
 - 100Base-TX Cat5 UTP/STP RJ-45
- Packet filter/forwarding rate:
 - 148,800 pps (100 Mbps)
 - 14,880 pps (10 Mbps)
- Buffer memory: 96 kBytes
- MAC address table: 2048 entries
- Switch architecture: store and forward
- Certifications: FCC Class B, CE Mark

LEDs

- Power
- Link/TX
- Full/half duplex

POWER

- External power adapter, 7.5 V DC
- Power consumption: 3.5 Watts (maximum)

ENVIRONMENTAL

- Metal housing
- Dimensions: 130 (L) x 77 (W) x 24 (H) mm (5.1 x 3 x 0.9 in.)
- Weight: 355 g (0.8 lbs.)
- Operating temperature: 0° to 55°C (32° to 140°F)
- Operating humidity: 10% to 90% RH, non-condensing
- Storage temperature: -20° to 90°C (-4° to 194°F)

PACKAGE CONTENTS

- Fast Ethernet Office Switch
- External power adapter
- User manual

For more information on INTELLINET NETWORK SOLUTIONS products, consult your local dealer or visit www.intellinet-network.com.


INTELLINET
NETWORK SOLUTIONS
BRINGING NETWORKS TO LIFE

Copyright © INTELLINET NETWORK SOLUTIONS

All names of products or services mentioned herein are trademarks or registered trademarks of their respective owners. Distribution and reproduction of this document, and use and disclosure of the contents herein, are prohibited unless specifically authorized.

INT-523318-DS-0706-01