

**HI-SPEED USB 2.0,
SATA, 3.5"
EXTERNAL
ENCLOSURE
USER MANUAL**
MODEL 709026



Thank you for purchasing the MANHATTAN® Hi-Speed USB 2.0, SATA 3.5" External Enclosure, Model 709026. This 3.5" enclosure is fully SATA-capable and is equipped with SATA L-type internal power and data ports and an external Hi-Speed USB 2.0 mini-B connection. Install an idle, unused drive to quickly and easily transfer, share and archive data or expand storage capacities for desktop and notebook computers. Additional features:

- Supports SATA data transfer rates of up to 480 Mbps
- Lightweight, compact design ideal for portable storage
- Sturdy aluminum case protects drive and facilitates cooling
- Fits standard 3.5" SATA drives with easy, quick installation and rear-mount power switch and LED indicator
- Windows and Macintosh compatible, Plug and Play, hot swappable
- Lifetime Warranty

Package contents:

- External Enclosure
- USB cable and power adapter
- User manual and stand

System requirements:

- Available USB type-A port
- Windows 98/Me/2000/XP or Mac OS 10.x and above

HARDWARE INSTALLATION

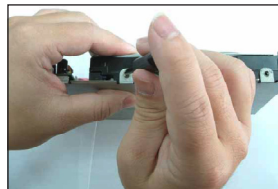
NOTE: Images are for example only. Actual positions of switches or connectors may vary slightly.



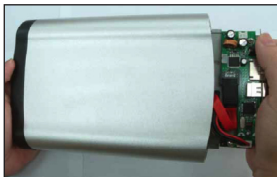
1. Open the enclosure.



2. Connect the power and SATA cables to the HDD.



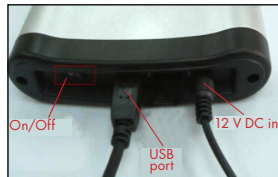
3. Tighten the sides screws to secure the HDD.



4. Slide the connected hard disk drive inside the external enclosure.



5. Replace and tighten the two retaining screws to secure the rear panel.

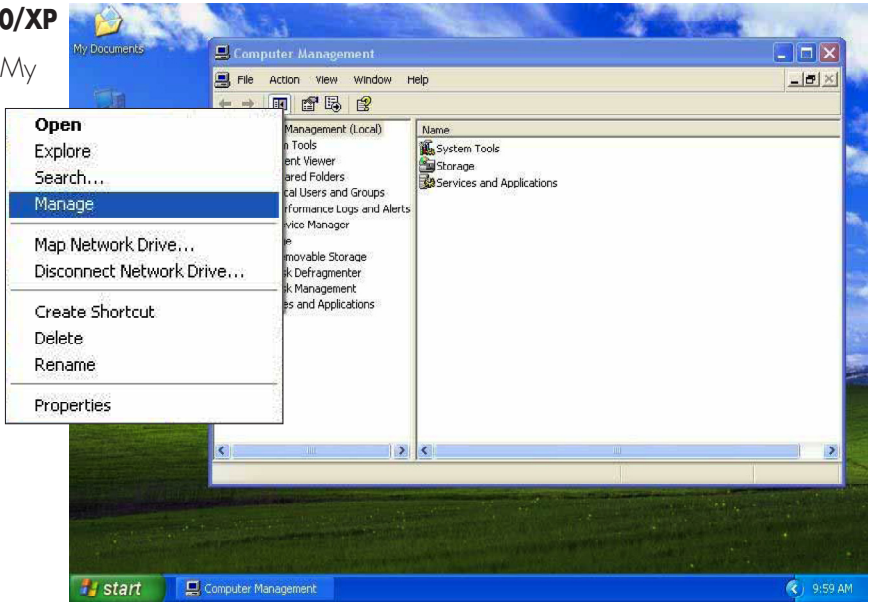


6. Connect the external cables.

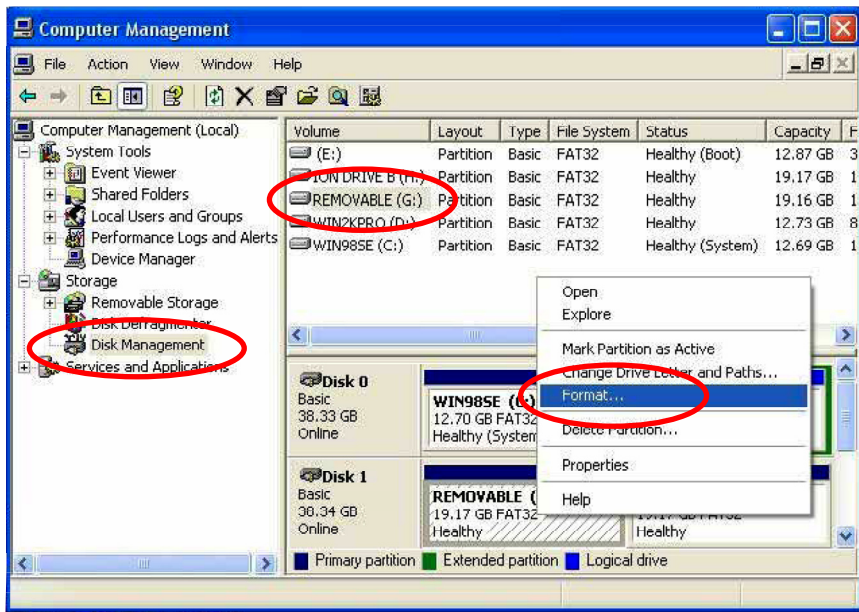
SOFTWARE INSTALLATION

Windows 2000/XP

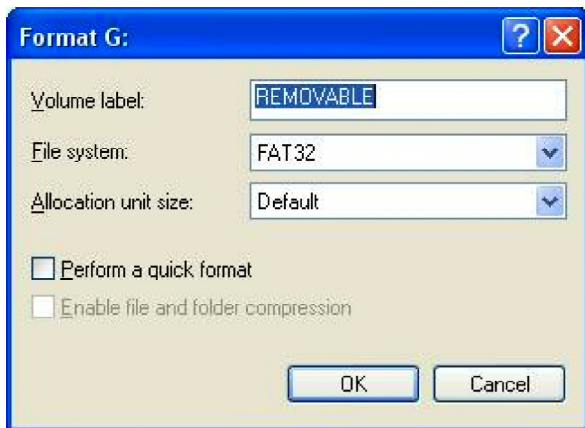
1. Click on the My Computer icon; click "Manage" to initialize the hard disk drive.



2. Click "Disk Management," then click "Removable Disk," then click "Format."



3. Confirm that "Removable" and "FAT32" are entered/selected in the "Volume label" and "File system" fields, respectively. Click "OK."



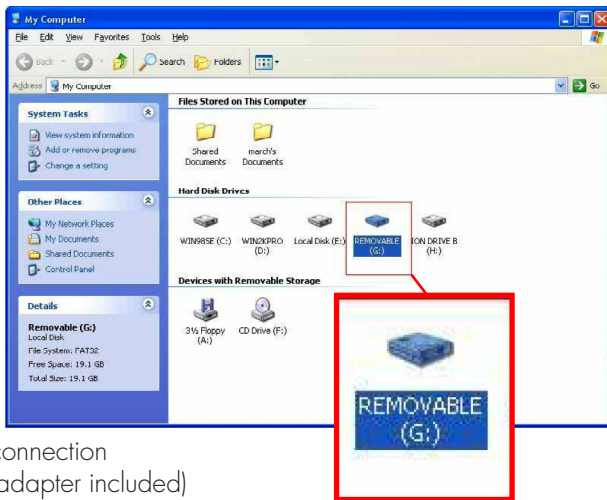
4. When the warning prompt appears, click "OK."



5. Click "My Computer" and confirm that the new "Removable" icon appears. The External Enclosure with hard disk drive is now ready for use.

SPECIFICATIONS

- JMICRON 20339
- SATA L-type internal data and power connections
- Hi-Speed USB 2.0 type-B external connection
- DC single-post power input (power adapter included)
- USB 2.0 type-A to type-B cable, 1.2 m (4 ft.)
- 12 V / 2 A power adapter, 1 m (3.5 ft.)
- 22.25 x 12.7 x 3.8 cm (8.75 x 5 x 1.5 in.)
- 363 g (12.8 oz.)
- Designed for FAT32 systems





MANHATTAN® offers a complete line of PC Components,
Peripherals, Cables and Accessories. Ask your local computer dealer for more
information or visit us online at
www.manhattan-products.com

Copyright © MANHATTAN
All products mentioned are trademarks or registered trademarks of their respective owners.