

eSATA, 3.5" EXTERNAL ENCLOSURE USER MANUAL

MODEL 709040



 **MANHATTAN**

MAN-709040-UM-0308-01

Thank you for purchasing the MANHATTAN® eSATA, 3.5" External Enclosure, Model 709040. Fully SATA-capable and equipped with eSATA I-type ports, the chipset-free design quickly transfers data without conversion between SATA-enabled systems. Just install an idle, unused drive to create new and productive storage solutions. Additional features:

- Supports SATA data transfer rates up to 3 Gbps
- Lightweight, compact design ideal for portable storage
- Sturdy aluminum case protects drive and facilitates cooling
- Fits standard 3.5" SATA drives with easy, quick installation — includes rear-mount power switch
- Windows and Macintosh compatible, Plug and Play, hot swappable
- Lifetime Warranty

Package contents:

- External Enclosure
- eSATA and power adapter
- User manual and stand

System requirements:

- eSATA-enabled PC or Macintosh
- Available eSATA port
- Windows 2000/XP/Vista or Mac OS 10.x and above

HARDWARE INSTALLATION

NOTE: Images are for example only. Actual positions of switches or connectors may vary slightly.



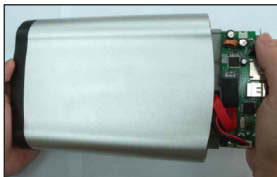
1. Open the enclosure.



2. Connect the power and SATA cables to the HDD.



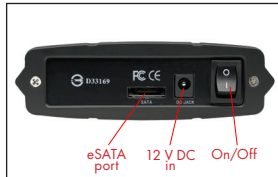
3. Tighten the sides screws to secure the HDD.



4. Slide the connected hard disk drive inside the external enclosure.



5. Replace and tighten the two retaining screws to secure the rear panel.

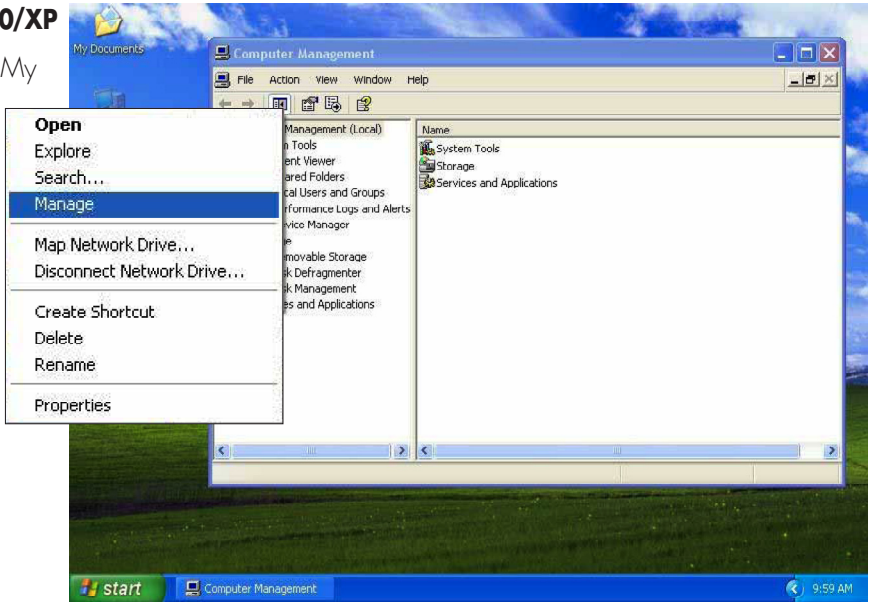


6. Connect the external cables.

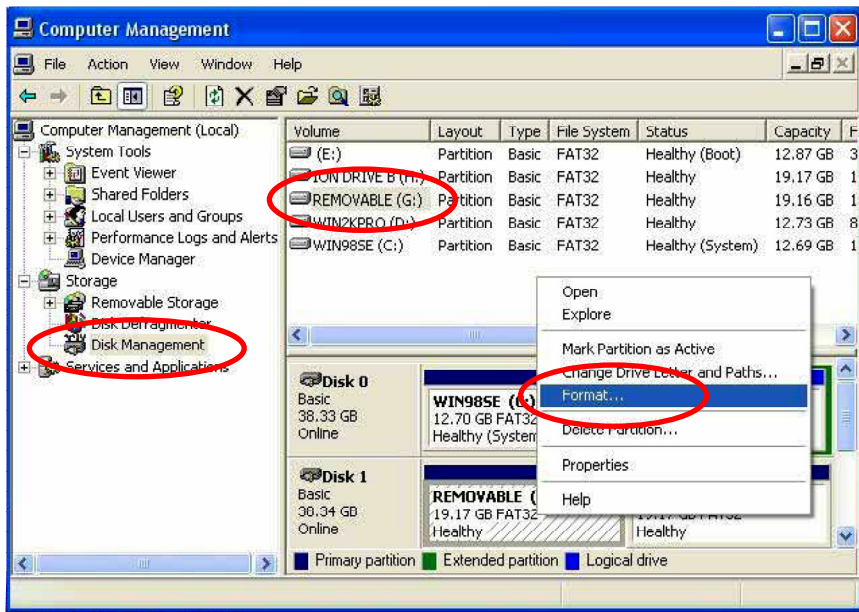
SOFTWARE INSTALLATION

Windows 2000/XP

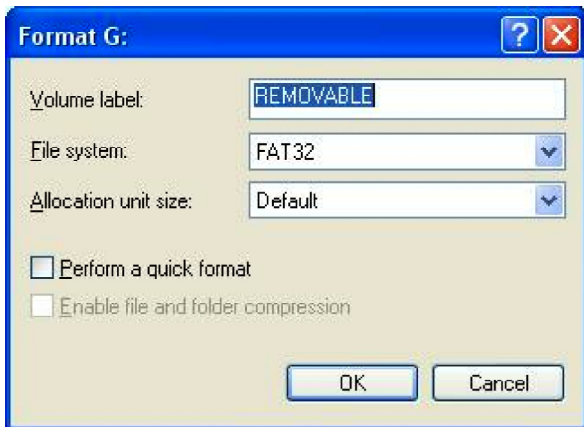
1. Click on the My Computer icon; click "Manage" to initialize the hard disk drive.



2. Click "Disk Management," then click "Removable Disk," then click "Format."



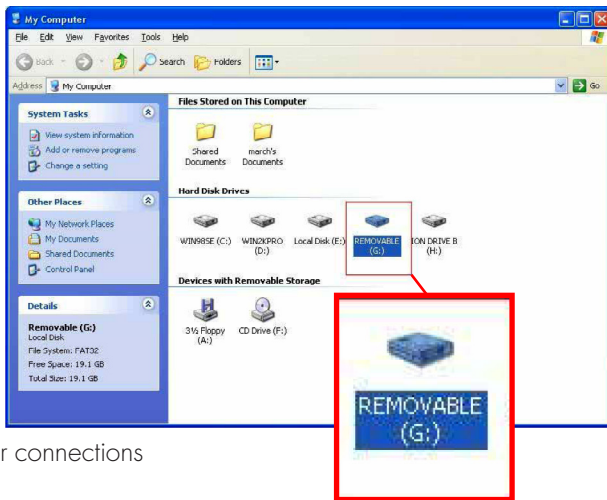
3. Confirm that "Removable" and "FAT32" are entered/selected in the "Volume label" and "File system" fields, respectively. Click "OK."



4. When the warning prompt appears, click "OK."



5. Click "My Computer" and confirm that the new "Removable" icon appears. The External Enclosure with hard disk drive is now ready for use.



SPECIFICATIONS

- SATA L-type internal data and power connections
- eSATA L-type external connections
- DC single-post power input (AC adapter included)
- eSATA L-type to L-type flat cable, 1.1 m (3.75 ft.)
- 12 V / 2 A power adapter, 1 m (3.5 ft.)
- 22.25 x 12.7 x 3.8 cm (8.75 x 5 x 1.5 in.)
- 363 g (12.8 oz.)



MANHATTAN® offers a complete line of PC Components,
Peripherals, Cables and Accessories. Ask your local computer dealer for more
information or visit us online at
www.manhattan-products.com

Copyright © MANHATTAN
All products mentioned are trademarks or registered trademarks of their respective owners.