
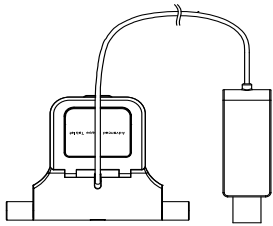


Hardware Installation Guide

1. Check contents inside

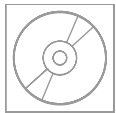
 Please check to see if entire contents are included in package. If not, please contact customer service nearby or store.



Station



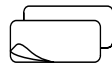
Pen



Install CD



Deco Fixture



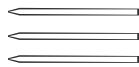
Both-side adhesive tapes



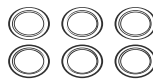
Pen Cap



Pen Tip Case



Pen Tip



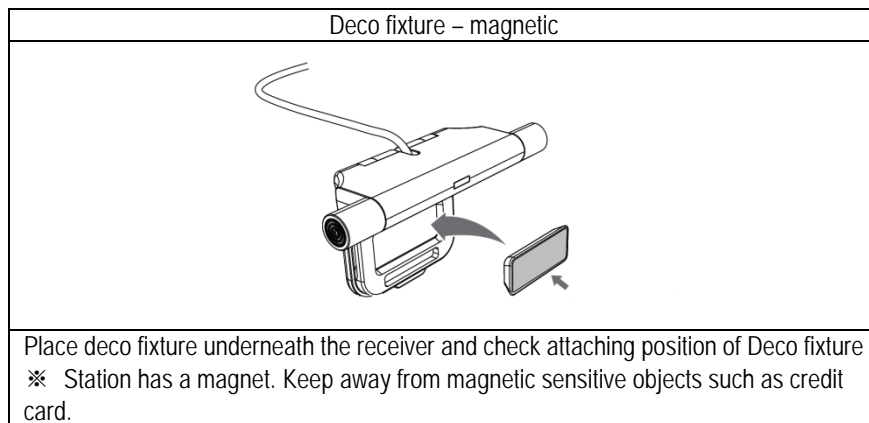
Batteries



Ball Pen Tip

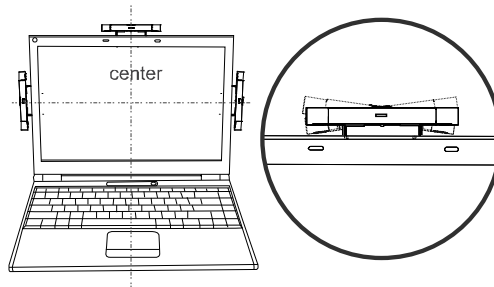
2. Install receiver station on laptop

(1) <Place deco fixture underneath the receiver>



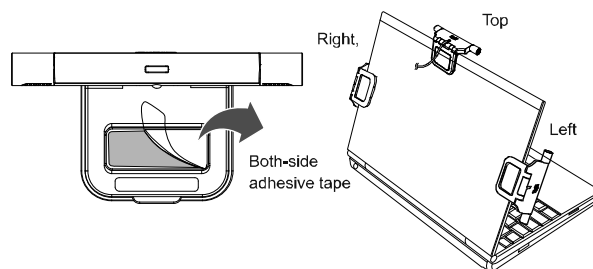
(2) < Placed the station in the middle >

- Install in the middle section of laptop screen
- Make sure that the station is positioned without tilting.
- When left and right section of screen is not activated, place station a little higher than present position.
- If there is a knob in the middle, place station on either left or right side.

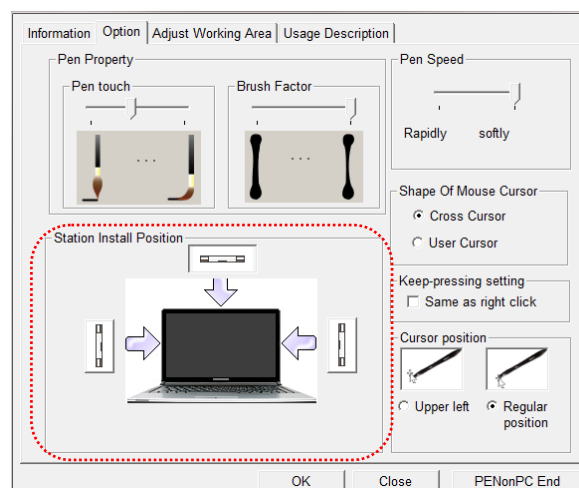


(3) < Install on laptop screen >

- Take off the masking tape on the back side of deco fixture. Attach deco fixture on top, right or left side of laptop frame.

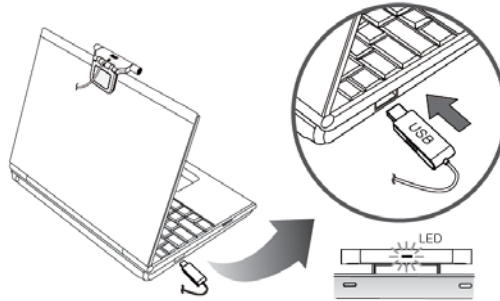


※ please confirm station position setting in software option (MINT Control).



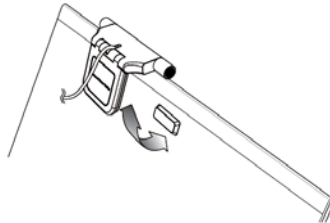
(4) < Connect USB >


- Plug USB connector to USB port of PC.
- Blue light will show on station and PC will automatically recognize device, if the driver software is installed correctly.



(5) < Store separated from computer >

Keep the station separated from PC when not being used. You can attach the station to deco fixture when you want to use it again.



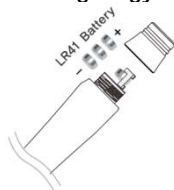
 If S/W is not installed, proper operation may not occur even device is successfully installed. Please refer to "Software Installation" section of installation guide and install driver software.

3. Prepare to use pen

- (1) Remove battery cap of pen by rotating counter-clockwise.



- (2) Insert 3 batteries heading bulgy side to pen tip. Be careful of battery polarity when inserting.

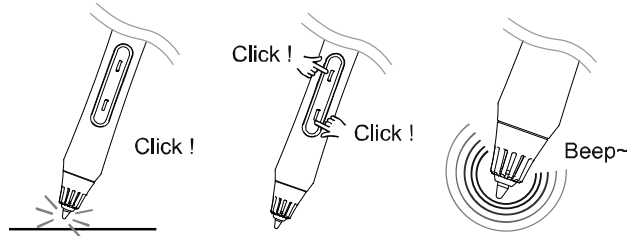


- (3) Put battery cap back onto pen.



< How to confirm whether pen is active >

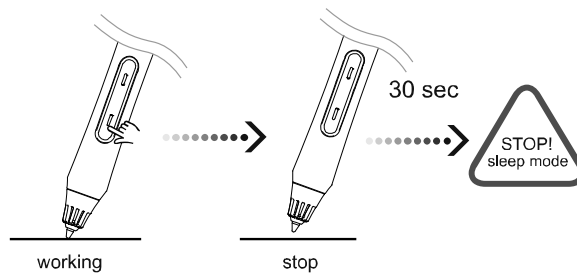
- Upon inserting batteries, press pen tip or pen button in order to activate.
- If the pen is properly activated, small beeping sound is created from ultrasonic wave and you can check the sound to your near ear.
(Some may be insensitive to hear the sound since the beeping sound is significantly small)



- When the pen does not operate properly, or pen cursor jitters terribly.
 - Please check whether dirt or stain is on pen battery or not. If it is so, remove it completely and operate again.
 - Insert new battery in case of discharge or inferiority
(Discharged or inferior battery might be contained white power or deformed bulgy).

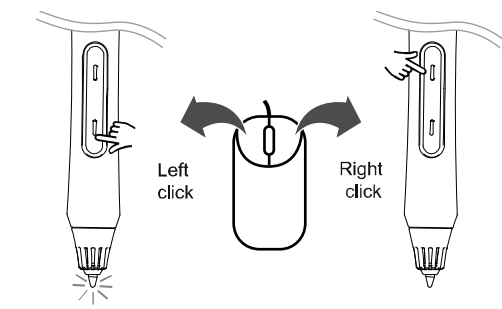
< Auto Power-off (Sleep) mode >

- When the pen is not in use for 30 seconds, it will be automatically initiated power-off mode.



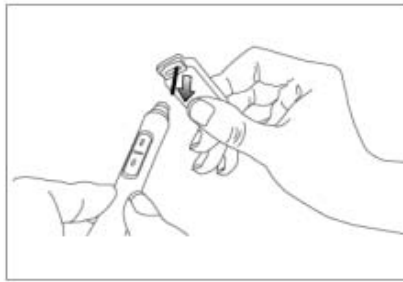
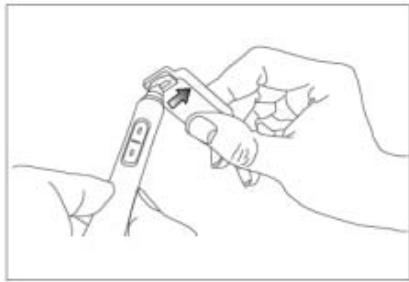
< Pen tip and Pen button functions >

- Pen tip operates the same as left button of mouse.
- Lower pen button operates the same as left button of a mouse/upper pen button operates the same as right button of a mouse.



(4) <How to remove pen tip from the pen? >

- Insert pen tip to the hole on pen tip case.
- Press down the pen tip case and pull it out lightly.

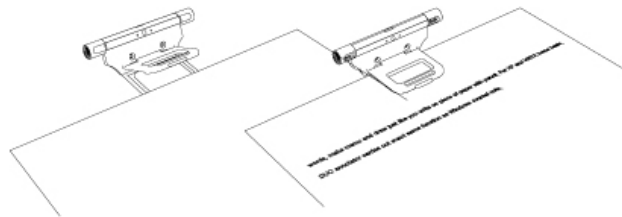


(5) <How to insert pen tip to the pen>

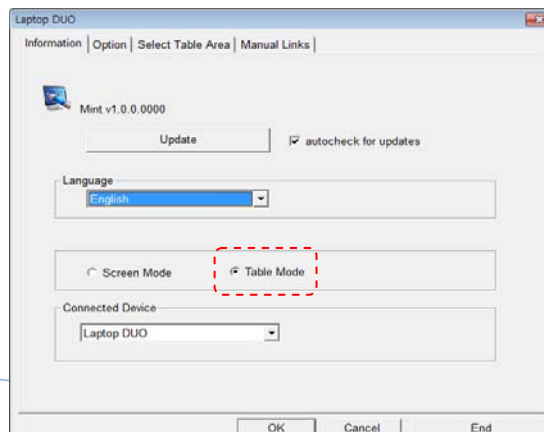
- Insert pen tip to the pen tip hole of the pen.
- Push the nib lightly.
- Test it by beeping sound by clicking the pen.

(6) < How to use ballpoint pen-tip >

- By using ballpoint pen, you can write on paper.
- After placing station on the desk, clip Letter sized papers into station.



- Change the option in Mint Control to Table Mode, if you are using the it on a flat surface.
(It can be used on normal flat surface. You can change the tip to ball pen to write on the paper.)



4. Product Specification

Operating size		170mm ~ 358mm diagonal (16 inch)
Technology		Ultrasonic and infrared
Sampling rate		Over 70Hz
Device standard		HID pen device
Resolution		About 600 DPI (Sampling) / Valid with 0.2mm
CPU		Over 1 GHz
RAM		Over 512 MB
WINDOWS OS		Windows XP / Vista (32bit) / 7
Interface		USB port / CD-ROM driver
Operating Temperature / Humidity		0~40 C / 20~ 80 % RH
Storage Temperature / Humidity		-20~60°C / 20~90% RH
Station	Power source	DC 5V (USB)
	Power consumption	320mW
	Station Size / Weight	(W)77mm X (D)58mm X (H)8.5mm / about 17g
Pen	Power source	LR41 Cell battery (1.5V)
	Power consumption	7mW
	Pen Size / Weight	(W)130 X (D)16.5 / App. 17.5g(including pen tip, batteries)
	Pen Lifetime	Lifetime in does not work – App.7 months Lifetime in normal usage – App. 1 months (1 hours continuous use per day)